

# College of Liberal Arts Research Statistics

2004-2014

May 12, 2015



Eric Dickey  
Research Program Manager  
Oregon State University  
College of Liberal Arts  
Office of the Dean  
[eric.dickey@oregonstate.edu](mailto:eric.dickey@oregonstate.edu)

# College of Liberal Arts Research Statistics

2004-2014

## TABLE OF CONTENTS

### 1 Introduction

2 Data Sources

3 CLA Overview by FY

4 Breakdown by Schools

5 Breakdown by Agencies

6 Q/A

- introduction
- data sources
- overview of the College by year
- departments and schools
- funding agencies

# College of Liberal Arts Research Statistics

2004-2014

## TABLE OF CONTENTS

1 Introduction

**2 Data Sources**

3 CLA Overview by FY

4 Breakdown by Schools

5 Breakdown by Agencies

6 Q/A

## Data sources

- Research office
- Foundation
- Other

## Not included

- Co-PI data
- OSU Research Office FRT, GRF, or RERF
- Center for Humanities
- Graduate School student support

NOTE: Figures based on the award totals and dates, not how and when the funds are distributed.

# Research Statistics for CLA

Submitted proposal and funded project  
Numbers and Dollars by Fiscal Year

## TABLE OF CONTENTS

1 Introduction

2 Data Sources

**3 CLA Overview by FY**

4 Breakdown by Schools

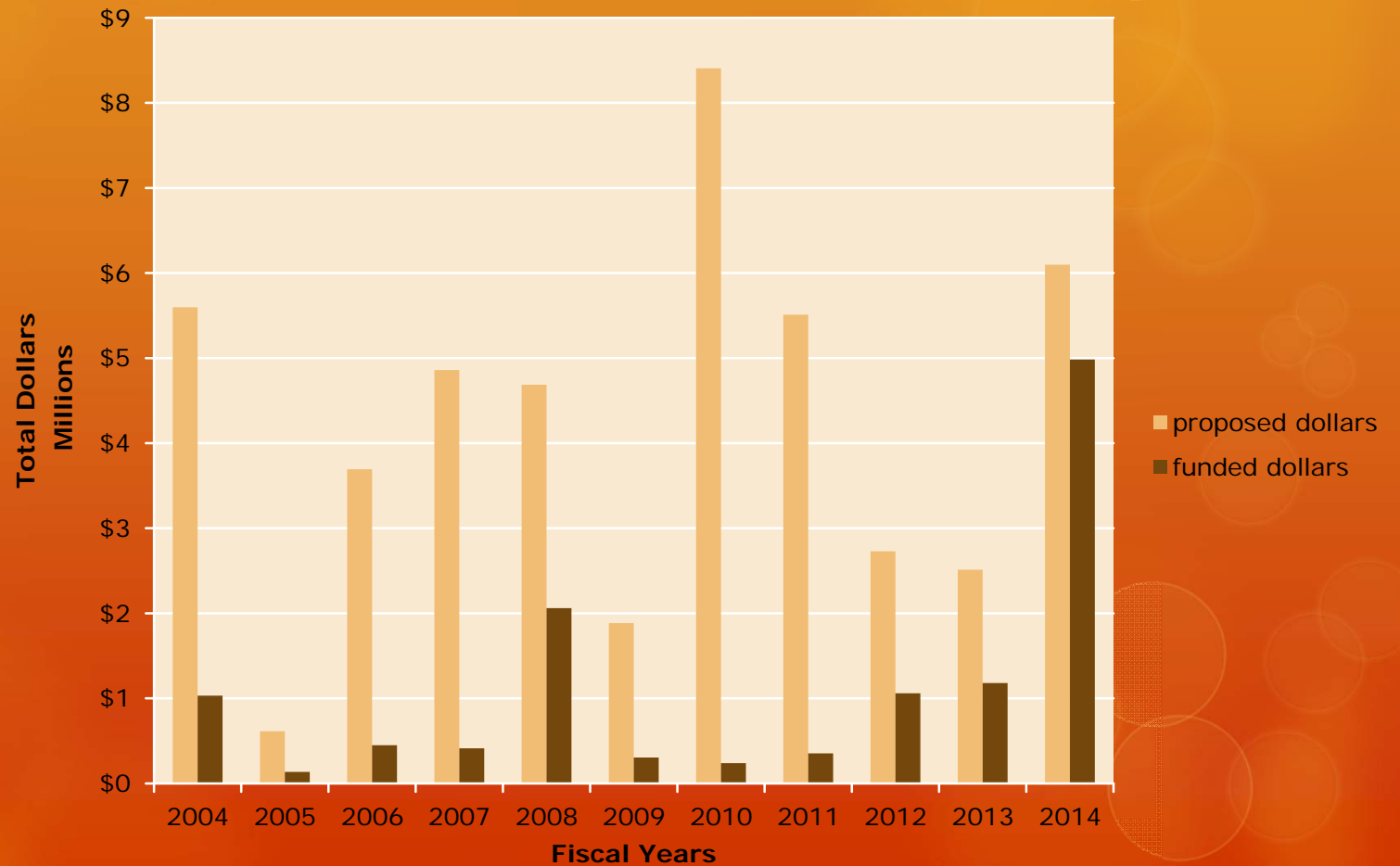
5 Breakdown by Agencies

6 Q/A

FY	submitted		funded	
	#	\$	#	\$
2004	20	\$5,596,702	12	\$1,032,377
2005	12	\$614,101	7	\$136,071
2006	25	\$3,692,455	8	\$450,200
2007	31	\$4,858,983	9	\$412,695
2008	28	\$4,687,817	13	\$2,061,279
2009	23	\$1,884,574	7	\$304,408
2010	16	\$8,406,429	5	\$238,797
2011	25	\$5,509,512	9	\$353,667
2012	28	\$2,729,227	11	\$1,059,064
2013	24	\$2,512,727	8	\$1,180,943
2014	22	\$6,098,148	8	\$4,984,236
<b>Totals</b>	<b>254</b>	<b>\$46,590,675</b>	<b>97</b>	<b>\$12,213,737</b>

# Research Statistics for CLA

## Submitted proposals and funded projects: Dollars by Fiscal Year



### TABLE OF CONTENTS

1 Introduction

2 Data Sources

**3 CLA Overview by FY**

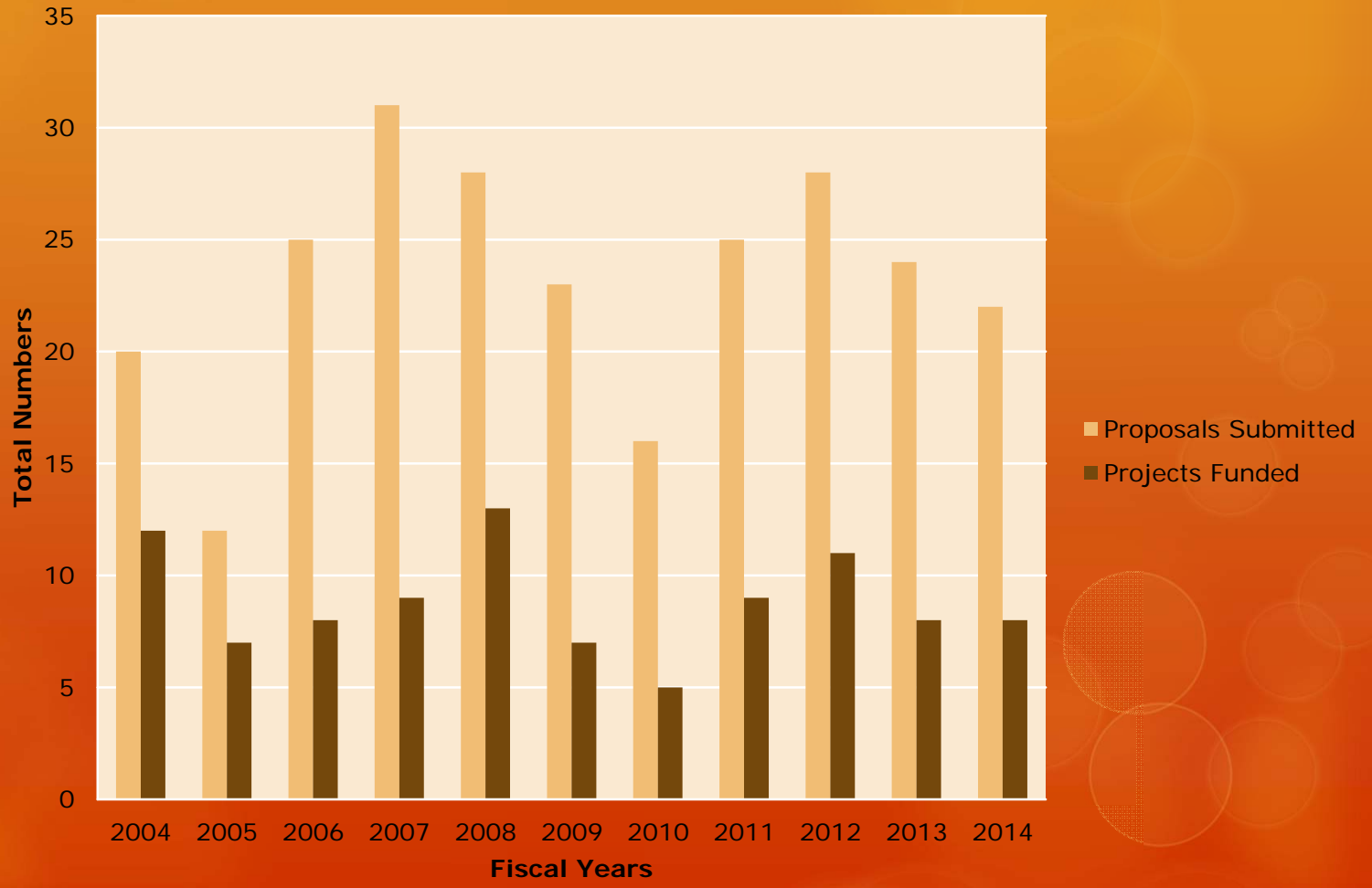
4 Breakdown by Schools

5 Breakdown by Agencies

6 Q/A

# Research Statistics for CLA

Submitted proposals and funded projects:  
Numbers by Fiscal Year



## TABLE OF CONTENTS

- 1 Introduction
- 2 Data Sources
- 3 CLA Overview by FY**
- 4 Breakdown by Schools
- 5 Breakdown by Agencies
- 6 Q/A

# Research Statistics for CLA

## Average numbers

### TABLE OF CONTENTS

1 Introduction

2 Data Sources

**3 CLA Overview by FY**

4 Breakdown by Schools

5 Breakdown by Agencies

6 Q/A

### Submitted

- \$4,235,516 per year
- 23 proposal per year

### Adjusted

- \$4,174,460
- 23.4 proposal per year

### Adjusted less ADVANCE

- \$3,833,388 per year
- 23 proposals per year

### Funded

- \$1,110,340 per year
- 8.8 projects per year
- 38% success rate
- 16.7% funding rate

### Adjusted

- \$788,159 per year
- 8.67 projects per year
- 37% success rate
- 11% funding rate

### Adjusted less ADVANCE

- \$708,212 per year
- 8.67 projects per year



# Research Statistics for CLA



## TABLE OF CONTENTS

- 1 Introduction
- 2 Data Sources
- 3 CLA Overview by FY
- 4 Breakdown by Schools**
- 5 Breakdown by Agencies
- 6 Q/A

Shifting gears...  
from College numbers  
to School numbers...



# Research Statistics for CLA

## Numbers and Dollars by School

Schools	Departments	Submitted		Funded	
		#	\$	#	\$
SAC	Art	2	\$12,000	2	\$12,000
	Speech Com	4	\$780,780	3	\$293,412
SWLF	English	6	\$1,507,116	1	\$738,387
SLCS	Anthropology	88	\$8,981,704	28	\$2,105,628
	Foreign Lang & Lit	2	\$339,271	2	\$339,271
	Women's Studies	10	\$5,769,464	2	\$4,442,929
SHPR	History	11	\$681,322	8	\$159,084
	Philosophy	28	\$1,569,641	11	\$677,813
SPP	Economics	2	\$224,201	1	\$20,000
	Political Science	16	\$1,327,585	7	\$412,329
	Sociology	49	\$13,109,065	23	\$1,493,404
SPS	Psychology	35	\$12,038,766	9	\$1,519,480
CLA	Dean's Office	1	\$249,760	0	\$0
Totals		254	\$46,590,675	97	\$12,213,737

### TABLE OF CONTENTS

1 Introduction

2 Data Sources

3 CLA Overview by FY

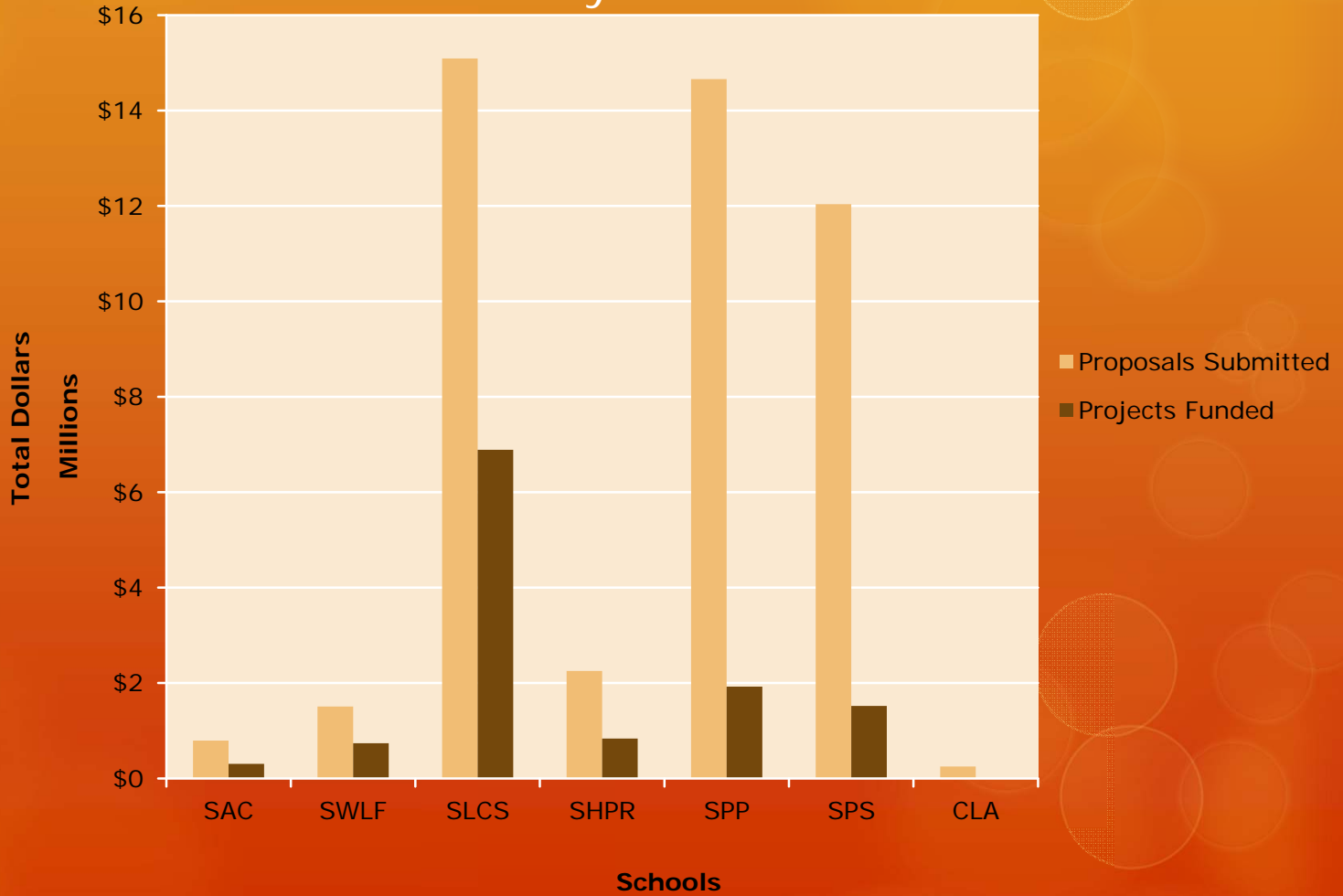
**4 Breakdown by Schools**

5 Breakdown by Agencies

6 Q/A

# Research Statistics for CLA

Submitted proposals and funded projects:  
Dollars by School



## TABLE OF CONTENTS

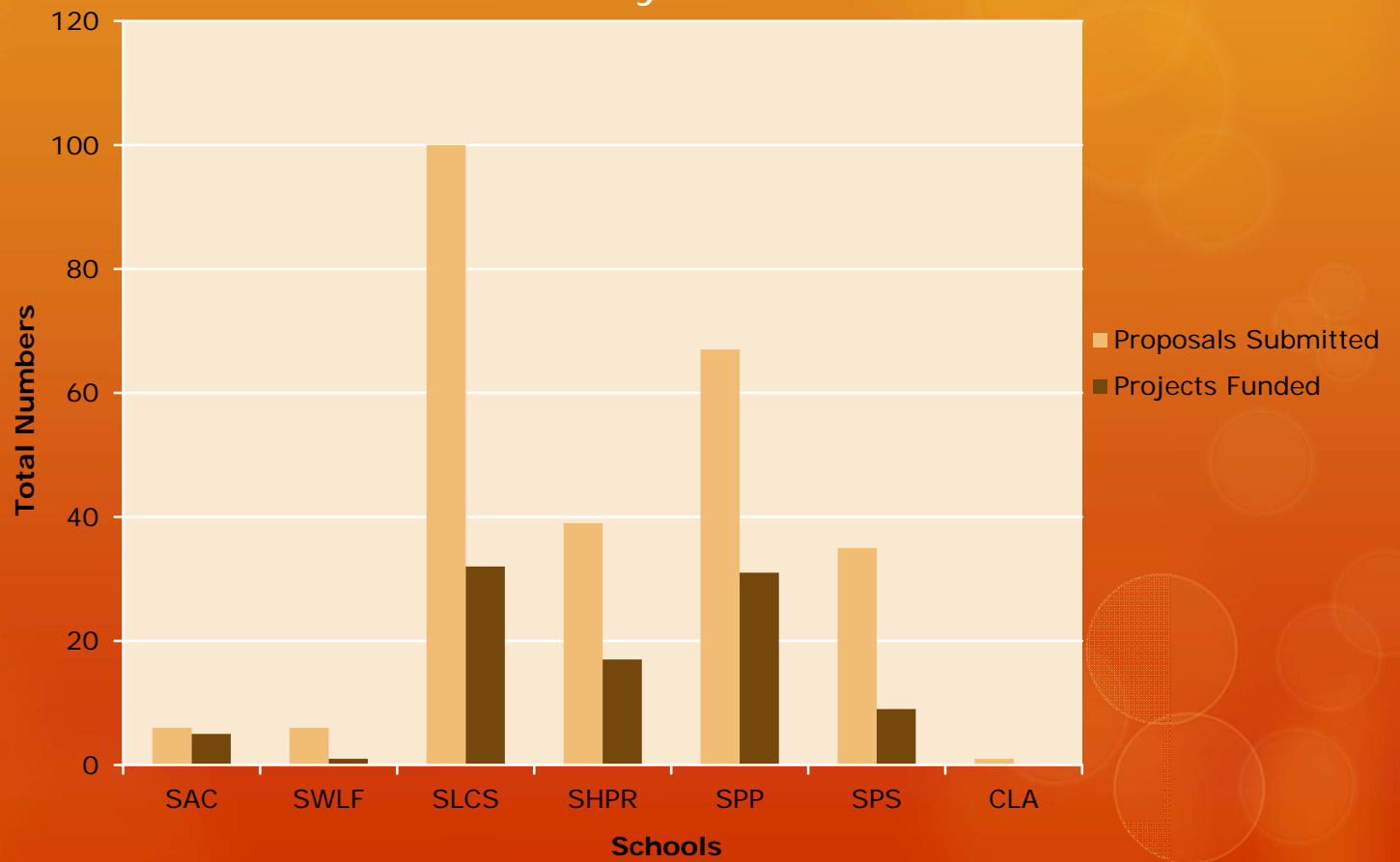
- 1 Introduction
- 2 Data Sources
- 3 CLA Overview by FY
- 4 Breakdown by Schools**
- 5 Breakdown by Agencies
- 6 Q/A

# Research Statistics for CLA

## Submitted proposals and funded projects: Numbers by School

### TABLE OF CONTENTS

- 1 Introduction
- 2 Data Sources
- 3 CLA Overview by FY
- 4 Breakdown by Schools**
- 5 Breakdown by Agencies
- 6 Q/A



# Research Statistics for CLA



## TABLE OF CONTENTS

1 Introduction

2 Data Sources

3 CLA Overview by FY

4 Breakdown by Schools

**5 Breakdown by Agencies**

6 Q/A

Shifting gears again...  
from School numbers  
to Agency numbers...

# Research Statistics for CLA

## Submitted proposals and funded projects by Agencies

### TABLE OF CONTENTS

- 1 Introduction
- 2 Data Sources
- 3 CLA Overview by FY
- 4 Breakdown by Schools
- 5 Breakdown by Agencies**
- 6 Q/A

agency category	submitted		funded	
	#	\$	#	\$
Miscellaneous	22	\$621,991	10	\$200,452
World Bank	1	\$738,387	1	\$738,387
Oregon	21	\$1,453,132	16	\$1,074,442
Federal	165	\$39,783,655	53	\$9,307,670
BLM	20	\$489,035	4	\$154,383
NSF	54	\$22,832,726	14	\$6,395,322
NEH	7	\$1,113,171	2	\$339,271
DOD	1	\$952,487	1	\$952,487
NIH	1	\$124,176	0	\$0
USDE	2	\$2,858,832	0	\$0
USDA	18	\$1,446,215	7	\$382,371
FS	14	\$844,590	8	\$482,800
PHS	12	\$5,530,596	1	\$49,946
Other	36	\$3,591,827	16	\$551,090
Universities	22	\$2,870,504	3	\$241,010
Foundations	23	\$1,123,006	14	\$651,776
<b>Totals</b>	<b>254</b>	<b>\$46,590,675</b>	<b>97</b>	<b>\$12,213,737</b>

# Research Statistics for CLA

## Other Federal Agencies

### TABLE OF CONTENTS

- 1 Introduction
- 2 Data Sources
- 3 CLA Overview by FY
- 4 Breakdown by Schools
- 5 Breakdown by Agencies**
- 6 Q/A

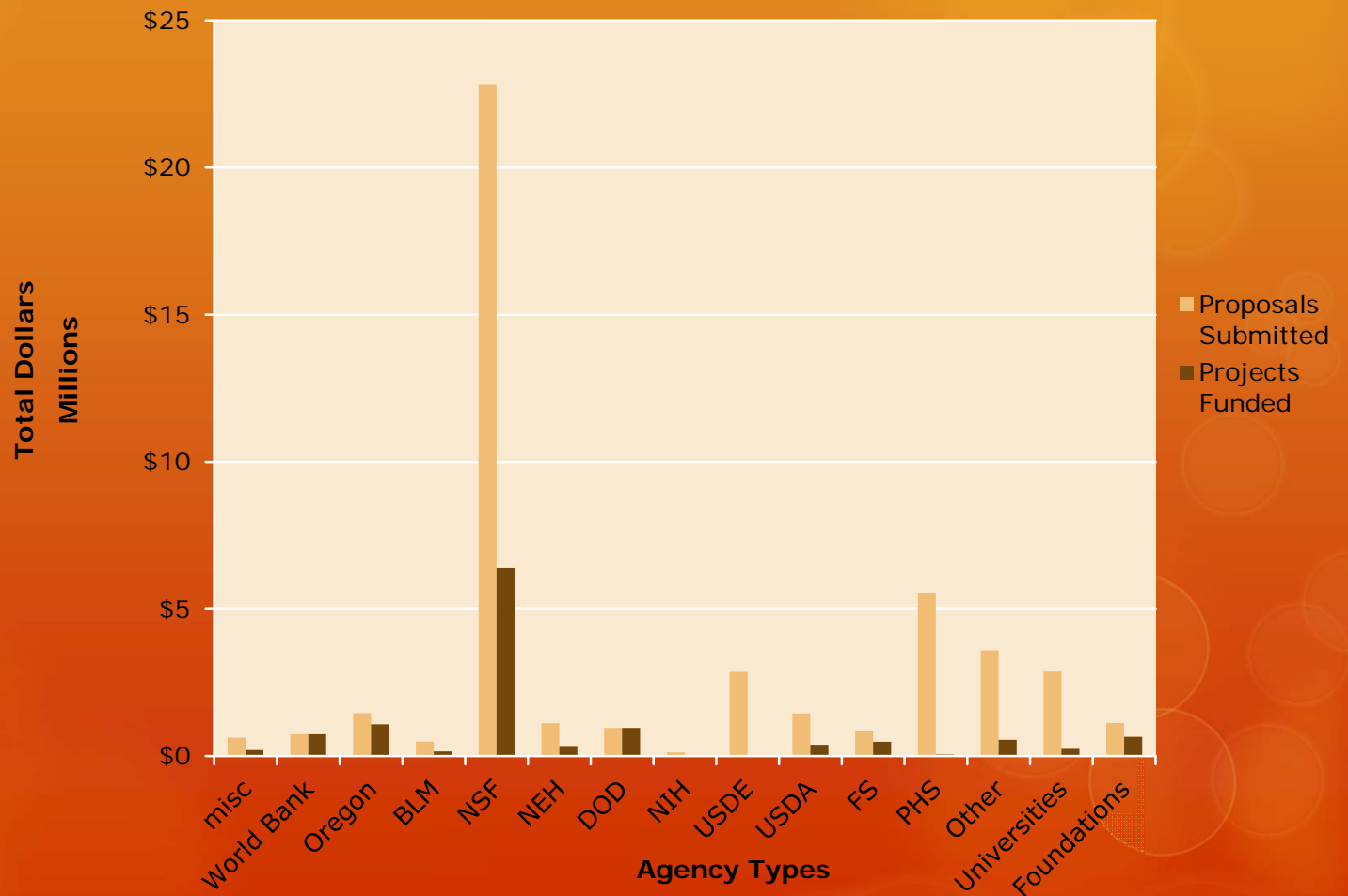
	submitted		funded	
NOAA	4	\$1,080,132	1	\$199,997
OSG	9	\$109,536	9	\$109,536
EPA	1	\$204,201	0	\$0
NPKS	4	\$240,975	2	\$82,329
USDS	2	\$748,114	0	\$0
USDI	5	\$102,371	1	\$26,783
NASA	3	\$95,875	2	\$92,965
BECA	2	\$649,876	0	\$0
USIBSF	2	\$192,100	0	\$0
NPRB	2	\$66,434	1	\$39,480
NIJ	1	\$39,996	0	\$0
NEA	1	\$62,217	0	\$0
<b>Totals</b>	<b>36</b>	<b>\$3,591,827</b>	<b>16</b>	<b>\$551,090</b>

# Research Statistics for CLA

## Submitted proposals and funded projects: Dollars by Agencies

### TABLE OF CONTENTS

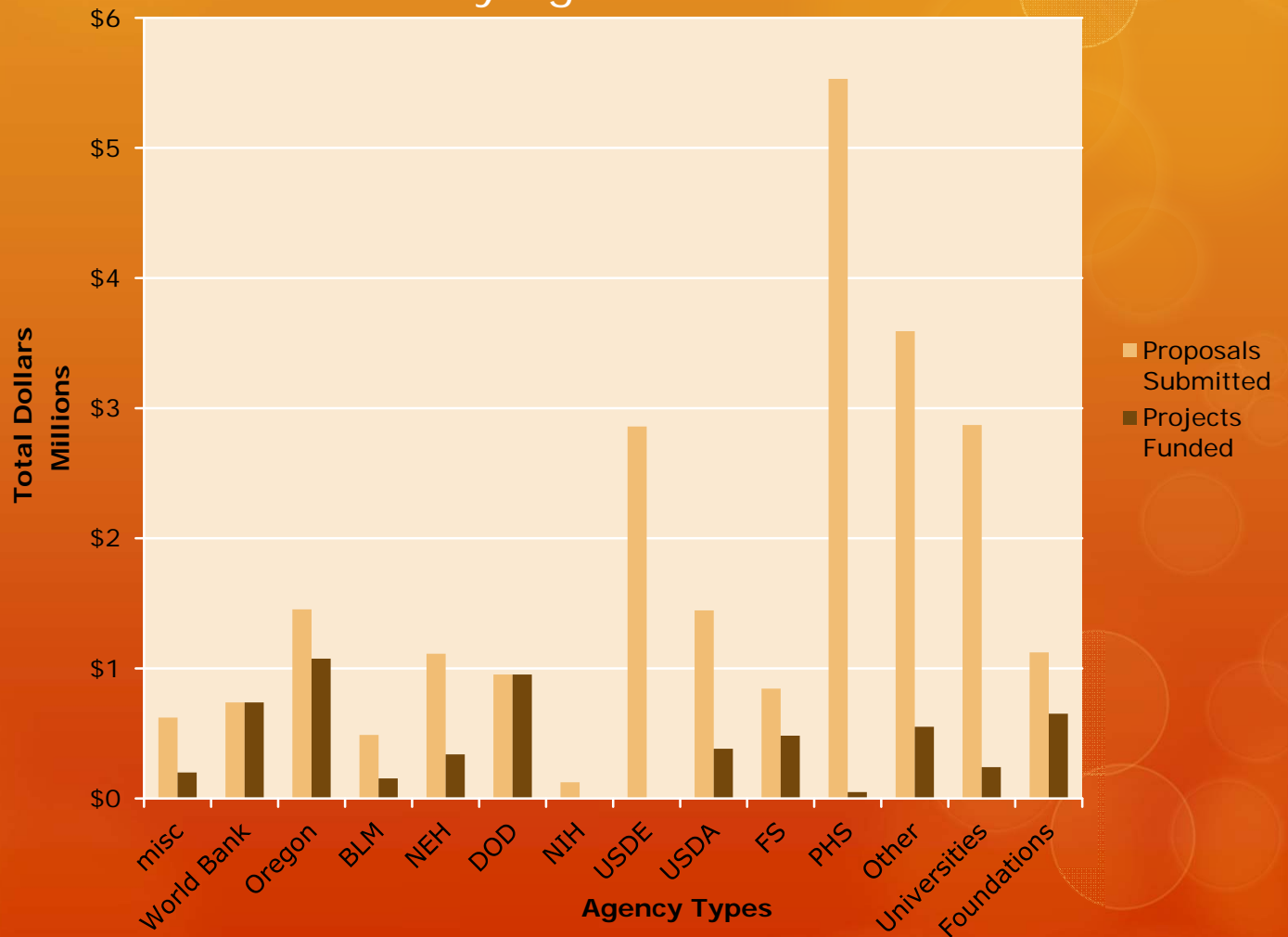
- 1 Introduction
- 2 Data Sources
- 3 CLA Overview by FY
- 4 Breakdown by Schools
- 5 Breakdown by Agencies**
- 6 Q/A





# Research Statistics for CLA

Submitted proposals and funded projects:  
Dollars by Agencies without NSF

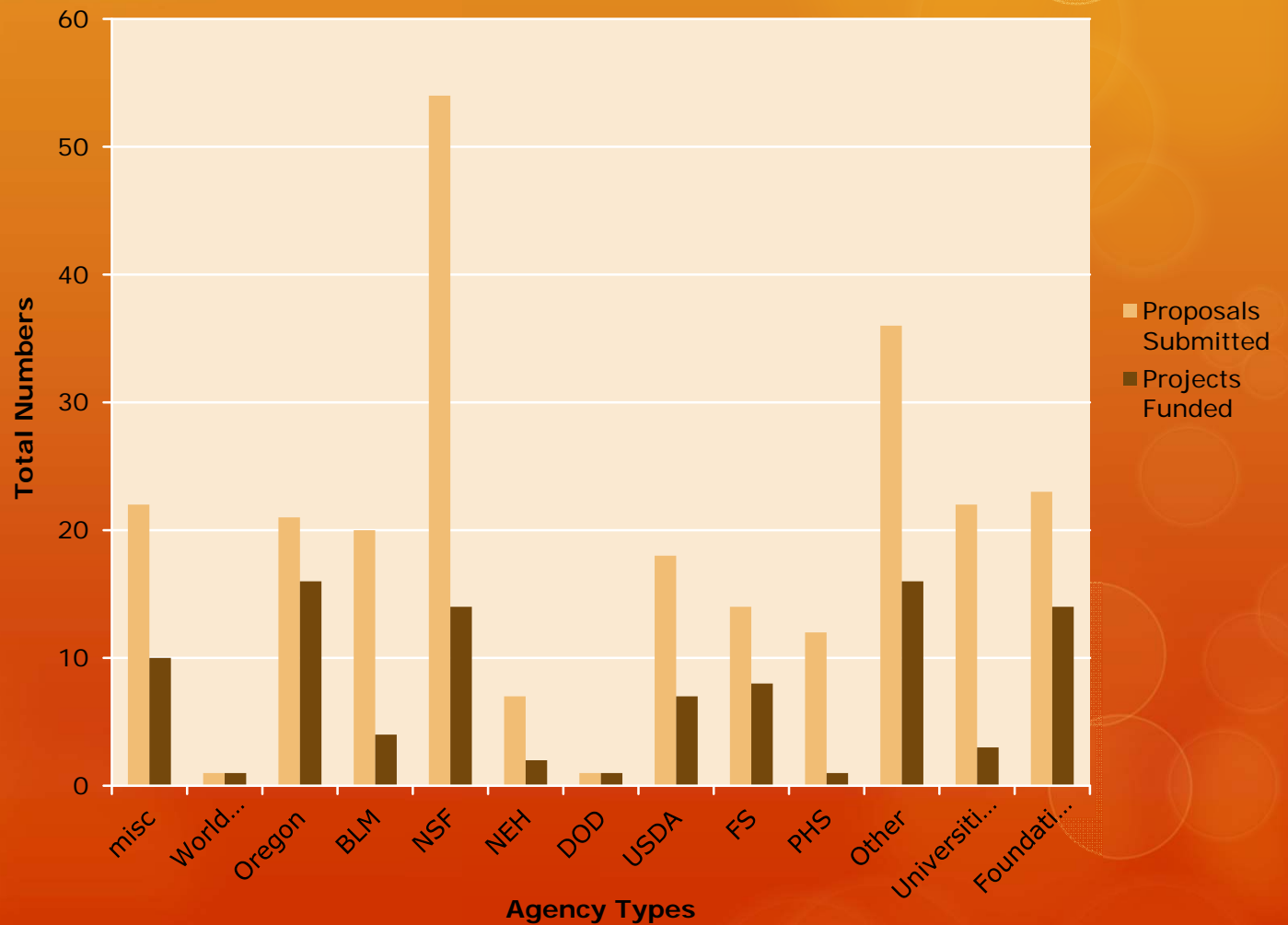


## TABLE OF CONTENTS

- 1 Introduction
- 2 Data Sources
- 3 CLA Overview by FY
- 4 Breakdown by Schools
- 5 Breakdown by Agencies**
- 6 Q/A

# Research Statistics for CLA

## Submitted proposals and funded projects: Numbers by Agencies



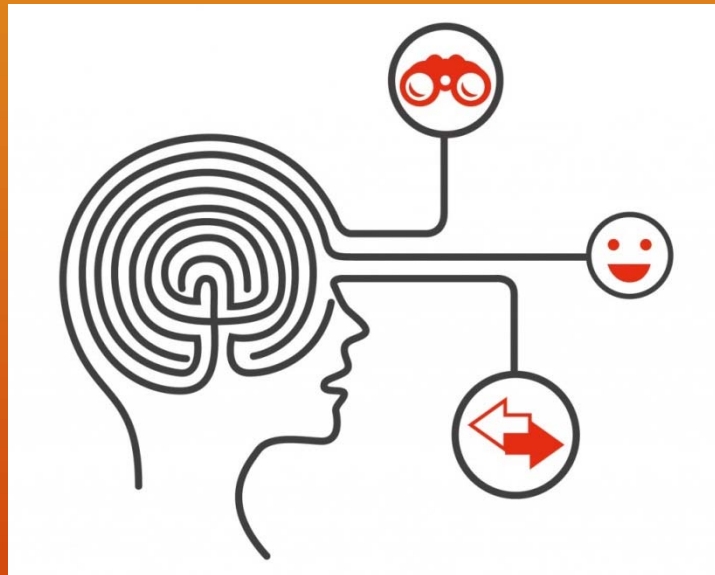
### TABLE OF CONTENTS

- 1 Introduction
- 2 Data Sources
- 3 CLA Overview by FY
- 4 Breakdown by Schools
- 5 Breakdown by Agencies**
- 6 Q/A

# Research Statistics for CLA

## TABLE OF CONTENTS

- 1 Introduction
- 2 Data Sources
- 3 CLA Overview by FY
- 4 Breakdown by Schools
- 5 Breakdown by Agencies
- 6 Q/A



## Summary

- Prolific history
- Independent researchers

## Recommendations

- Targeted calls
- Team Science

# Research Statistics for CLA

## TABLE OF CONTENTS

- 1 Introduction
- 2 Data Sources
- 3 CLA Overview by FY
- 4 Breakdown by Schools
- 5 Breakdown by Agencies

[6 Q/A](#)

Questions?

Thank you!



Eric Dickey  
Research Program Manager  
Oregon State University  
College of Liberal Arts  
Office of the Dean  
[eric.dickey@oregonstate.edu](mailto:eric.dickey@oregonstate.edu)  
541 737-1537