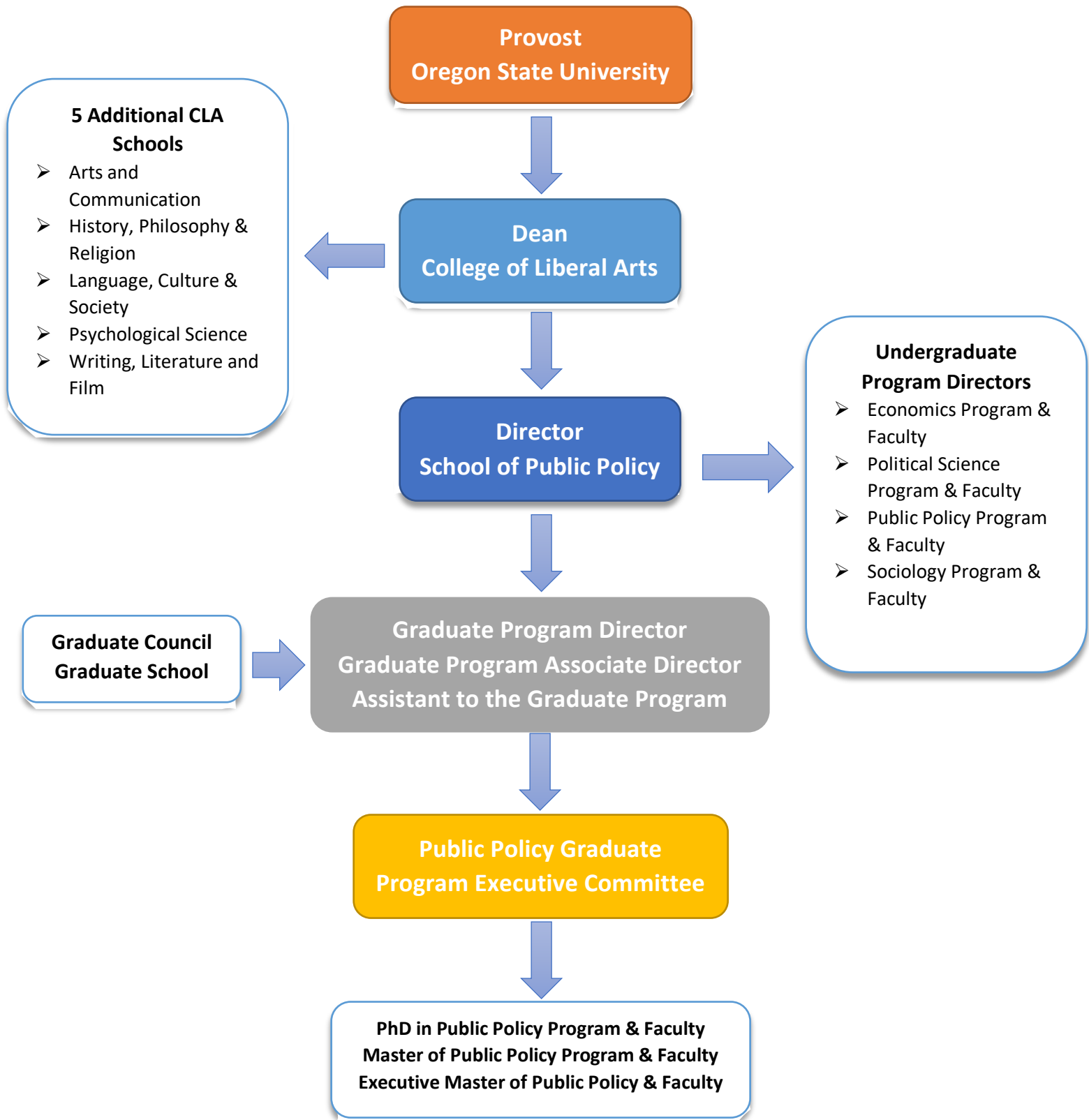


School of Public Policy Organizational Chart



Graduate Program in Public Policy

School of Public Policy

Oregon State University

Administrative Structure

Director of the Public Policy Graduate Program: Appointed by the Director of the School of Public Policy in consultation with the Program Coordinators of Economics, Political Science and Sociology. The Director is responsible for program management and budget, head advisor for students, student recruitment, website maintenance, NASPAA reports and accreditation, and representing the program on campus and in the community. The director has a .50 FTE appointment in the Public Policy Graduate Program and a .50 FTE appointment in their home program. The Director is Professor Brent S. Steel (Email: bsteel@oregonstate.edu; 318 Bexell Hall; Phone: 541-737-2811).

Associate Director of the Public Policy Graduate Program: Appointed by the Director of the School of Public Policy in consultation with the Program Coordinators of Economics, Political Science, Public Policy, Sociology and the Graduate Program Director. The Associate Director assists the Graduate Director program management, advising, student recruitment, learning outcome assessment, NASPAA reports and accreditation, and representing the program on campus and in the community.

Assistant to the Graduate Program Director: Appointed by the SPP Director in consultation with the Graduate Director and Program Coordinators, the Assistant to the Graduate Director assists with student recruitment, advising, annual assessment reports for OSU and NASPAA, graduate student travel, graduate student awards applications, organizing student meetings and fieldtrips, graduate assistantship appointment paperwork, graduate student assessment, course scheduling and course overrides, and other responsibilities that support the Graduate Director.

Public Policy Executive Committee ([Core Faculty](#)): This committee is responsible for all MPP, Executive MPP and PhD programs planning and policy. Membership includes the MPP, EMPP and PhD Admissions Committees, the Program Coordinators for Economics, Political Science, Public Policy and Sociology, all faculty that teach required core MPP and PhD courses, concentration advisors, four elected students (2 MPP, 1 EMPP and 1 PhD), a MPP Alumnus, a potential employer, the Graduate Director, and the School Director. The committee meets three or more times a year as needed.

Admissions Committees: Appointed by the Director of the Public Policy Graduate Program, the MPP Admissions Committee, Executive MPP Admissions Committee, and PhD Admissions Committee are responsible for reviewing and selecting new MPP, EMPP and PhD student applicants. The committees are comprised of core faculty members from Economics, Political Science, Public Policy, Sociology, and the Graduate Director.

MPP and EMPP Student Representatives: Elected by secret ballot by MPP/EMPP cohort and modality, student representatives are responsible for representing MPP/EMPP student interests and attending Public Policy Graduate Committee meetings.

PhD Student Representative: Elected by secret ballot by PhD students, student representatives are responsible for representing PhD student interests and attending Public Policy Graduate Committee meetings.

Additional Committees (all comprised of Public Policy Executive Committee Members):

- The PhD Admissions Committee makes all admissions decisions and GTA offers. The committee includes SPP Program Coordinators, eight members of core faculty across Economics, Sociology and Political Science, and the Graduate Director (12 members currently).
- The PhD Teaching Assignment Committee coordinates PhD teacher training and teaching assignments for on-campus and Ecampus undergraduate courses in Public Policy, Political Science and Sociology. The committee is comprised of Public Policy, Political Science and Sociology Program and Ecampus Coordinators, and Graduate Director.
- The MPP Admissions and Ecampus/Executive MPP Admissions Committee are comprised of 5 to 6 core faculty each from Economics, Political Science and Sociology. The committees have overlapping membership for quality control.
- MPP GTA appointments are made by the Economics, Political Science and Sociology Program Coordinators, the Director of the Oregon Policy Analysis Laboratory (OPAL), and the Graduate Director. Program Coordinators are responsible for individual GTA assignments in their units.

MPP Alumni Advisory Board: The MPP Advisory Board is composed of 10-12 MPP Alumni from across program cohorts and from diverse institutional positions (e.g., nonprofit, public sectors) that meets biannually to provide planning and advice for the MPP Program, and to serve as mentors and network connections for current MPP students.