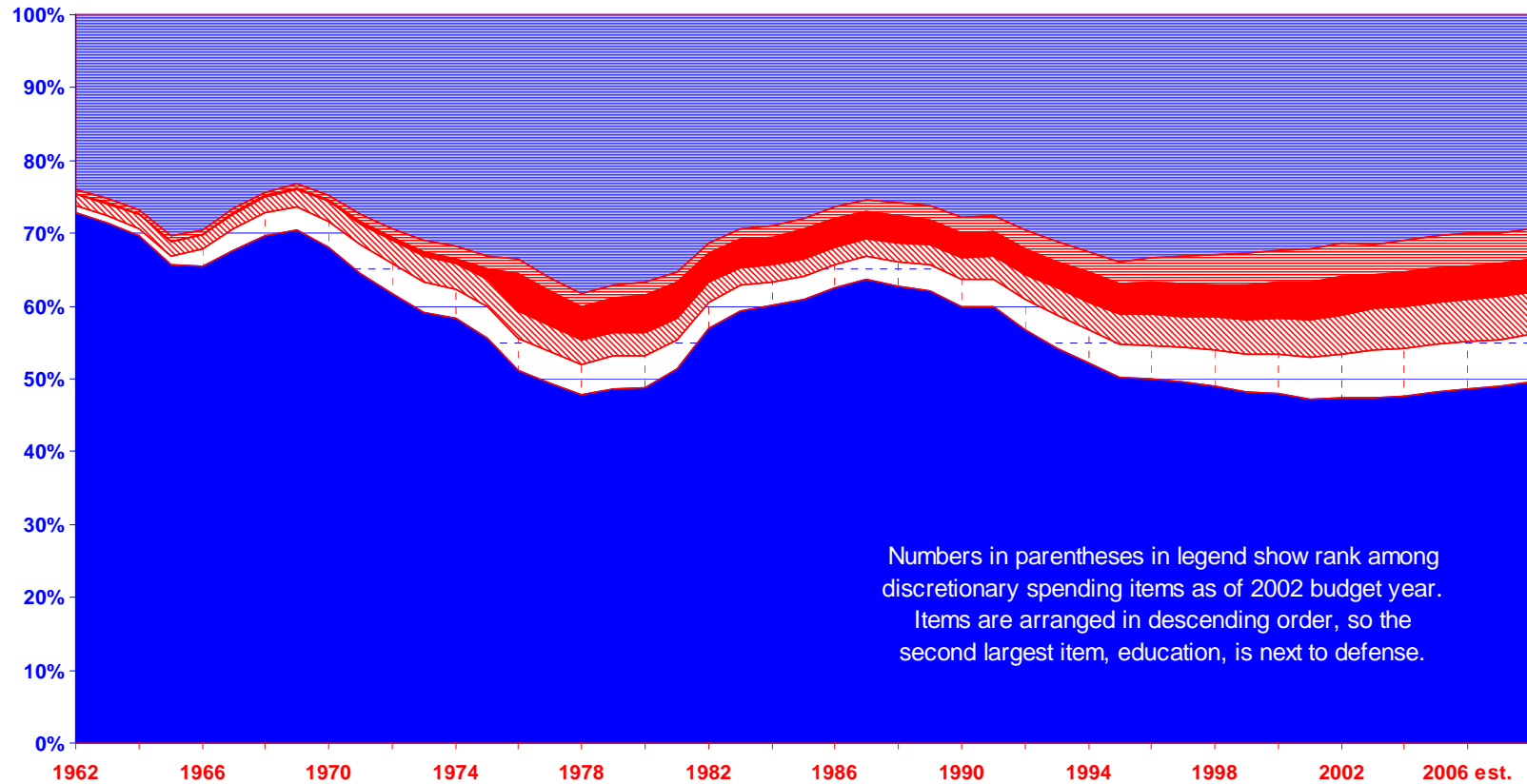


Composition of National Government Discretionary Spending Largest Categories 1962 to est. 2008, in Percent of Total Discretionary Outlays



■ National defense (1) □ Education (2) ▨ Health (3) ■ Ground transportation (4) ▩ Administration of justice (5) ▪ Other discretionary (not in top 5)

Source of data: *Budget 2004 Historical Tables, Table 8.7*